



Woolpi Whisper

The Rotary Club of Woolgoolga Inc.

PO Box 436, Woolgoolga NSW 2456
www.facebook.com/rotaryclubofwoolgoolga
woolgoolgarotaryclub.org.au
woolgoolgaheritagewalk.org

VOLUME 29 ISSUE 13 13 February 2017

Club President
Norm Michener
District Governor
Ian Jackson
Rotary International President
John F GERM

Meetings each month
1st Sat: auction shed
8:30-3:30
2nd & 4th Mondays
6-8pm Woolgoolga C.ex
3rd Monday
Board meetings VIC
if 5th Monday,
contact Secretary

Secretary:
Patty Delaney
0429 449 385
APOLOGIES TO:
Echah
0418 861 253
6654 2557
by 9am Monday

TONIGHT (13 FEB) TRIPLE TREAT: HESS & YEP STUDENTS

Tonight we will hear reports from three students who have been supported by our club, two who attended the recent **Honeywell Engineering Summer School (HESS)** – **Elliotte Hyder** and **Jesse Wills** – and the other who has returned from a year in Austria under the **Youth Exchange Program (YEP)**, **Clarence Harré** (photos—during his European adventure).

REPORT ON FUNDRAISING TO BUY AUCTION PICKUP VEHICLE

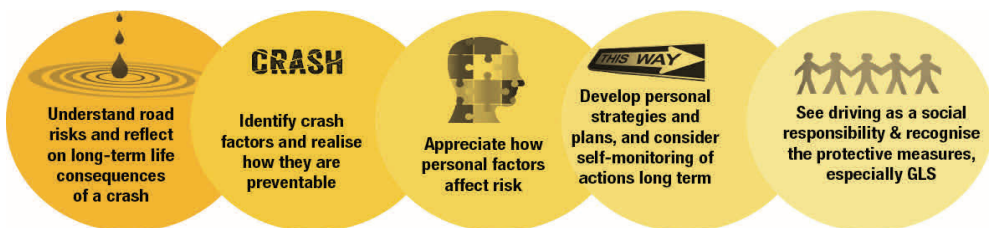
The “crowd-funding” initiative has so far raised close to \$800 (directly and indirectly) to help buy a vehicle suitable to do auction pickups with. To add your donation visit <https://www.givenow.com.au/rcwpickup> – **Woolgoolga Rotary’s online donations page at GiveNow**, a commission-free online donation service. You will be taken to the Help Us Pick Up! Rotary Auctions Woolgoolga page, where you can donate using your credit card. (You can also get there from our website).



UPDATE ON RYDA, THURSDAY 9 MARCH

RYDA (Rotary Youth Driver Awareness day) is less than a month away now. If you are able to assist on the day, please put it in your calendar now and let David Fayle know. All the modules have again been fine-tuned for this year, and two of them renamed, though with fairly small changes to their content): The I in Drive (Jason Newcombe), and Road Choices (Snr Const Bernadette Snow). The Seniors Centre being unavailable, a new venue had to be arranged – the Library Meeting room (readily accessed by a pathway from the rear of the “mud brick”. Vicki Rieder (Easy Driving) will take over at the track from Sue Ridden (moved to South Coast). Returning Facilitators are Les Burrell and Carol Fear (After the Crash) and Dani Canakis (Genevieve’s Story). Yet to be finalized are the new Facilitator for Risks and Distractions, and (a new development) the driver for Stopping Distances.

The learning objectives for students attending RYDA are:



UPDATE ON SCIENCE & ENGINEERING CHALLENGE, TUESDAY 4 APRIL

Seven schools are so far confirmed: McAuley Catholic College, Woolgoolga High, Bishop Drutt College, South Grafton High, Dorrigo High, Coffs Harbour High, and Orara High. Torrmina High may fill the 8th spot. Two activities new to Woolgoolga are Turbine and Flat Pack. The others have been done in a previous year: Bridge, Mars Rover, Catapult, Grasping at Straws, Helter Skelter and Electricity.

Among those on the committee: Gordon Letts has emailed for volunteers; Patty Delaney is seeking major sponsorships—hopefully of the multi-year naming rights variety; Phil Dalton is focusing on communication with the schools and logistics; Leslie Casey is managing the financial aspects.; and Dennis Houghton is overall manager.

Don’t forget the **S&E Challenge Dinner** on the previous evening (**Monday 3rd April** – which would usually not be a meeting, as it is auction week).



STATS AT A GLANCE
Visiting Rotarians: Colin Lowe (North Fife, Scotland), Morag Lowe (North Fife Inner Wheel)
YEP:
Guests: Michael Stubbs, Paul Maher, partner Bronwyn
Attendance: 16 (73%)
Apologies: John, Harjinder, Trish, Gareth, Geoff, Peter
Raffle: Morag Lowe
Birthdays: Garry Kennedy 6 Feb, Patty Delaney 8 Feb, Mary Bryant 20 Feb, Ian Fitzgerald 22 Feb, Rotary 23 Feb (1905) , Lesley Fitzgerald 26 Feb
Anniversaries: Dick & Marie Matthews 17 Feb , Ian & Lesley Fitzgerald 27 Feb

YEP NEWS

Kiahni Huthnance is in **Finland**. No report has yet reached your editor, except that she has experienced snow for the first time—and I gather, a LOT of it!

Inbounder **Anne Schörghuber** has moved to new host parents in Moonee Beach: Paige and Roy Marsh –thank you!!

Kim Thompson and family again took Anne north, this time to the Gold Coast and Tambourine Mountain, including (among many others) Sea World (*Anne with Ray!*) and the Glowworm Caves.



ROTARY AUCTION SHED OPEN FOR BUSINESS THURSDAY 16 FEB

We're trialling opening the shed as a temporary "op-shop" next **Thursday: 16 Feb Opening Hours 3pm till 6pm**. Thank you to all the members who have volunteered to staff the op-shop day. Publicity will be important for a successful outcome. There's the club's Facebook page and some flyers, but **please let people know via any channel**.

REPORT (30 JAN) MICHAEL STUBBS ON LOCAL AREA FLOOD THREATS

Michael Stubbs (Deputy Regional Controller, local SES) opened our eyes to why and how local flooding occurs, especially focusing on Woolgoolga (small catchment area / flash flooding) and Grafton (major flooding but longer lead times to prepare). Michael emphasized that in *an emergency, you should ring 000 rather than 132 500*. He emphasized how dangerous floodwaters are—don't enter or drive in them. Bringing back memories were some videos from the 2009 Coffs flood and a Woolgoolga flood (featuring the Boydens). Michael also summarized why and how SES came into being in 1955, as well as the history of it locally. The local SES Unit controller, Paul Maher, also came to the meeting.

Colin and Morag Lowe from Scotland were also guests. Colin is a member of the Rotary Club of North Fife, Scotland, and he and Morag stayed with our Club on a Friendship Exchange in 2008. Morag is a member of North Fife Inner Wheel and is travelling with their Club's "bear" which has had its photo taken in countries around the world—photo on page 1 shows Morag and the bear with President Norm.

CLUB NOTICES	DISTRICT NOTICES
16 Feb Auction shed open for business 3pm-6pm trial	11-12 Feb District leadership meetings/training Uralla
4 Mar Auction (Woolgoolga Rugby League Club)	18 Feb Public Speaking semifinals, Walcha
9 Mar 2017 RYDA (brought forward from August)	4-5 Mar PETS President-elect Training Seminar Armidale
1 Apr Auction (Mullaway P&C)	16-19 Mar RYMARINE (Coffs H Daybreak)
3 Apr S&E Challenge Dinner, Seaview Tavern 5:30-8:30	24-26 Mar District Conference, Laurieton
4 Apr Science and Engineering Challenge	1-8 Apr RYLA (Rotary Youth Leadership Awards)

MEETING DUTY ROSTER Please swap nights if you cannot attend						
Date	13 Feb Partners	20 Feb Board	27 Feb Partners	6 Mar No meeting	13 Mar Partners	20 Mar Board
Attendance	Mary Bryant	VISITORS INFO	Geoff Royal	Auction 4 Mar in lieu	Lyndee Hagar	VISITORS INFO
Welcome/ Fellowship	Kim Thomson	CENTRE 4:15	Peter Lacy		Leslie Casey	CENTRE 4:15
Introduce Guest Speaker/s	Patty Delaney		Echah Wright		Pam Fayle	
Vote of Thanks	Dennes Fayle		Dick Matthews		Rod Mackenzie	
Guest Speakers or Event	HESS & YEP Elliotte Hyder, Jesse Wills, Clarence Harré		Michelle van Santen: Marine Debris: Bali & Woolgoolga		Cherie Topfer Preparing secondary students for workplace	

Your Rotary Club Needs YOU

Want to be on the BOARD? - (see Patty)

Can you help with AUCTION PICK-UPS or auctioneering? (See Dick)

WISH TO PROPOSE A NEW MEMBER? (Contact Pam)

KNOW A FAMILY INTERESTED IN HOSTING A YEP STUDENT? (See Patty)