

THE ROTARY CLUB OF WOOLGOOLGA INC.

WOOP! WHISPER

VOLUME 22 Issue 25 — 18 January 2010

Club President
Geoff Royal

District Governor
Neville Parsons

RI President
John Kenny



TONIGHT



Clyde Treadwell, Manager Land Use Planning, Coffs Harbour City Council speaks to us about Land Use planning in the area.
Remember we are back at our usual venue for the first time this year.



Meeting Place

Woolgoolga Diggers (RSL)

Monday Evenings

6.00pm for 6.15pm

Apologies to

6654 1234

LAST MEETING (Jan 11)

Was combined with Sawtell Club down at Boambee Creek for a BBQ. We numbered ten all told. A good balmy night was enjoyed by all present. Our thanks to the Rotary Club of Sawtell for inviting us & putting on a good summer BBQ.

YEP NEWS - Diarise the dates

WELCOME BACK JESSICA (Jan 19)

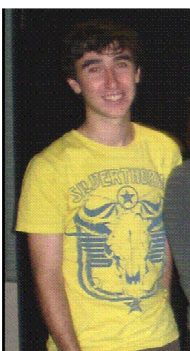
Ryan Williams came home last Saturday week after a year in Mexico.

Please remember that Jessica Portsmouth arrives back from Germany tomorrow, January 19. It would be great (if you are available) to be part of a "welcome home" contingent at Coffs airport. The flight arrival time is 12.45pm.

FORMAL WELCOME HOME (Jan 25)

We will formally welcome Jessica & Ryan back to Australia on Monday January 25 (a Partners' night) so just for fun Members are asked to come dressed with a Mexican, German or an Australian Day flavour.

FAREWELL TOM & BRIANNA (Jan 21)



Another date for your diary, Thursday 21 January

Tom and Brianna depart our fair shores for their exciting year ahead as YEP students representing our club.

Departure flight time at Coffs airport will be advised at tonight's meeting.



STATS AT A GLANCE

Visiting Rotarians: Nil

Guests, friends, partners:
Sally, Karen, Judy & Laura

Apologies: John, Brian, Trish, Terry, David E, Clive, Rod, Dick, Norm, Alastair, Keith, Merv, Sel, Geoff, George, Rob & Mark

Attendance: 6/23 (26%)

Lucky Draw: N/A

Birthdays/ Anniversaries:

Bronwyn 18, Charles & Elizabeth Phipps 18, Terry & Marlies 25, Graeme Smith 27

SERGEANT'S SESSION

As we were away in sunny Sawtell there was no opportunity available to extract some ill gotten gains in ill gotten ways.

DINNER FEES INCREASE

The RSL has advised us that meal cost will rise. As a result dinner fees will now be \$20 per head, effective from tonight.



Bowelscan is essentially a public awareness program seeking to increase community knowledge of bowel cancer and its symptoms.

The project involves the distribution to the public of a simple test kit on which is collected small specimens of faeces for analysis.

The program is usually organised on a District basis with the District Governor appointing a committee to be responsible for its im-

plementation. The week for Bowel Scan is yet to be determined but it will probably be early March. See David Edwards who will be managing Bowelscan as well as the volunteer roster in March.

REMINDER:



MEMBERSHIP FEES ARE NOW DUE

2010 District 9650: Conference 11th -14th March

Register on line at: www.decorama.com.au/rotary; View the draft program at: www.rotary9650.org.au/conference.htm

CLUB NOTICES	DISTRICT NOTICES
Jan 18 Board	Feb 13 Holly Wall in Public Speaking at Walcha
Feb 6 Auction - Mullawarra Dunecare Group	March 12 -14 District Conference Port Macquarie - Applications Available; Register on line
Feb 8 Board	April 10-17 RYLA 2010 at Bonny Hills
March ?? Bowelscan	June 20 -23 International Convention Montreal Canada
May 14 - 16 MUNA - Hosts Woolgoolga	

MEETING DUTY ROSTER		Please swap nights if you cannot attend	
Date	Jan 18	Jan 25	Feb 1
Attendance	Patty Delaney	Pam Fayle	TTBA
Welcome/Speaker Introduction	Ray Willing	Peter Lacy	TBA
Club Speaker	Echah Wright	Not Applicable	TBA
Vote of Thanks	Alastair Milroy	Geoff Royal	TBA
Guest Speaker	Clyde Treadwell CHCC "An overview of Land Use Plan- ning"	We welcome back Ryan and Jessica from Mexico and Germany	TBA

2010

BOARD

NOMINATIONS

**A New Treasurer
Needed...Please**

Always need HELP with
AUCTION PICK-UPS
(see Dick or Sel)

AUCTIONEERS required
for 1st Sat of the month
(see Sel & Keith)