

# THE ROTARY CLUB of WOOLGOOLGA Inc.

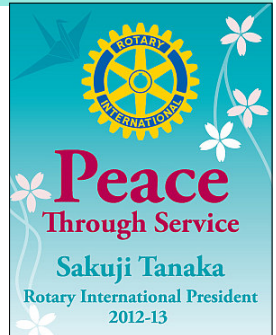
## Woopi Whisper



Club President  
**Pamela Fayle**

District Governor  
**Brian Beesley**

RI President  
**Sakuji Tanaka**



VOLUME 25, Issue 11— 3 September 2012

**AUCTION THIS SATURDAY to assist  
Red Rock Corindi Surf Life Saving Club so come help if you can.**

### THIS WEEK (3 Sept)

Having heard from the CWA ladies last week, this week we are providing gender balance by hearing from an organisation for men. Jeff Lindsay is coming along to talk about "Dads in Distress" and the very important work that organisation does in our community.



### LAST WEEK (27 August)

**Joyce Osborne and Trish Stabback** surprised most by telling us things about the CWA beyond the scone-baking image. There were a few in the audience who had been weighed in at a CWA baby health centre or partaken of a superb morning tea or two here and there, but we soon realised that the CWA is much more.

The organisation is 90 years old in NSW and next year the local branch celebrates 80 years of helping and informing women and families in this area. The local group is currently sponsoring and supporting a young girl with spina bifida from Yamba and her family and helps visit and entertain at the local nursing home once a month. On the education front CWA members study a country every year (this year Timor Leste), a primary product and also educate themselves about an animal (emu) and a bush plant (emu bush) each year. Their journal comes out 6 times a year and provides further info and education for members.

Woolgoolga Branch began with 6 members, rising to 26 in its first year and currently has 30 members. Locally the CWA was instrumental in lobbying for a local doctor to be based here and also crucial in getting a footpath along Beach St for school children to use. Each branch is twinned with others in a different part of the state and they help each other out. Woolgoolga is twinned with Boggabri and Werris Creek branches inland. Each branch contributes to fund raising and last year the CWA provided \$41,000 for prostate cancer research, this year focusing on Crohn's Disease as its target. The CWA tea rooms at Sydney's Royal Agricultural Show serve 33,000 scones (give or take a few) and raised \$75,000 last year.

With over 10,000 members overall the organisation is a powerful lobby group and currently active on the coal seam gas issue. In recent years teaching and maintaining traditional crafts has become a feature, boosted by CWA cake-baking being featured on TV's "Masterchef". The local branch runs a day for local year 5 primary school children where they learn from older members what school used to be like, get to play some old fashioned board games (dominoes etc), learn to bake scones and pikelets etc. Joyce and Trish have CWA cook books for sale and were relieved of quite a few on the night (photo at right shows Joyce selling one to George).



Meeting Place

**Woolgoolga C.ex  
(Bowling Club)**

Monday Evenings

**6.00pm for 6.15pm**

Apologies to

**6654 8890  
by 10.30am Monday**



**Trish Stabback**

CWA

Woolgoolga Branch  
Secretary

### STATS AT A GLANCE

**Visiting Rotarians:** nil.

**Visitors:** Joyce Osborne,  
Trish Stabback, Reinald  
Ross (from Germany)

**Apologies:** John, Rob, Peter  
B, Echah, Trish, Karen,  
Keith

**Attendance:** 17 (70.8%)

**Raffle winner:** Trish Stabback

**Birthdays:** David Fayle 30  
Aug, Peter Lacy 31 Aug,  
Edith White 4 Sep

**Anniversaries:** nil

## SERGEANT'S SESSION

With auction looming there were "pick up" fines aplenty. Yours truly was a bit too active with the bell and paid accordingly and we had visitors tax. Sergeant Rod paid to read out some of Terry's jokes which produced enough groans that Terry had to pay as well. Lyndee, just returned to the club, copped a couple of fines for good measure!

## CLUB NEWS

**Welcome Back Lyndee Hagar.** Lyndee, a former member who has been overseas teaching in the Middle East is back among us and already active on the Bush Dance Committee. Since leaving us and heading for Qatar, Lyndee has also been admitted to practise Law (congratulations).



**Getting Out There Day** is at the Opal Cove Resort on 30 August (sessions for year 12 students run from 9am to mid afternoon). Pop in and check it out if you can (see Mary for details).

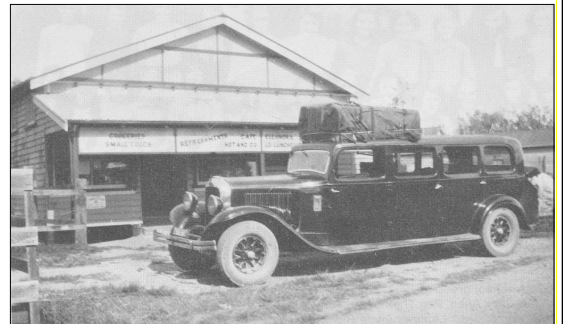
**Woolgoolga Shed** has a new shed which will have its grand opening on 31 August 10am-12noon (see Peter Lacy for details), President Pam will attend. Drop by and have a chat and see what they are up to.

**DATE CHANGE...NEXT PLANT STALL** will now be at the **November auction**. This latest change is to avoid a clash in October with the Garden Club's Garden Fair at the local Primary School and to reduce pressure on 6 October when we have both the auction and the Heritage Bush Dance.

**Banner exchange**— Thanks to former member Ray Willing we exchanged banners with Niagara on The Lake Rotary Club during Ray's recent travels.

## HERITAGE UPDATE AND PHOTO

If you were travelling in the 1930s you might have arrived in Woopi via the Tourist Coach, pictured compliments of Greg Yeates (from his father's book on Woolgoolga). The coach is parked in front of Waterhouse's shop which was located on the corner of Beach and Queen Sts. Tea and scones were served to the travellers there. The next meeting of the Heritage Committee will take place Friday 7 September at 2pm at Woolgoolga Art Gallery.



**The Board has decided to keep fees at the current level (\$200 pa or 6 month installments of \$100). Treasurer Geoff says dues are now OVERdue!**

### CLUB NOTICES

30 August Getting Out There Day  
 31 August Woolgoolga Shed Opening  
 1 Sept Auction (Red Rock Corindi SLSC)  
 6 Oct Auction to help Woolgoolga Shed  
 6 Oct Heritage Bush Dance

### DISTRICT NOTICES

September is New Generations month  
 1-5 Sept RYAG Dairy in Wingham  
 October is Vocational Services month  
 24-25 Nov YEP briefing Port Macquarie  
 26 Nov Woolgoolga Dive School to which district YEPPERS are invited.

### MEETING DUTY ROSTER Please swap nights if you cannot attend

Date	3 September	10 September (board)	17 September (partners)
Attendance	Sel Rogers	Geoff Royal	George Smede
Welcome/ Fellowship	David Fayle	Garry Kennedy	Glenda Kennedy
Club Speakers 3-5 minutes	Patty Delaney	David Fayle	David Edwards
Introduce Guest Speaker	George Smede	Rob White	Echah Wright
Vote of Thanks	Glenda Kennedy	Peter Lacy	Dick Matthews
Guest Speakers	Jeff Lindsay "Dads in Distress"	Stephen Smith Local Marine Biologist tbc	tbc

**Your Rotary Club Needs YOU**  
 Want to be on the BOARD? - (see Pam or Karen)  
 Can you help with AUCTION PICK-UPS or auctioneering? (See Dick)  
 WISH TO PROPOSE A NEW MEMBER? (See David E)  
 KNOW A FAMILY INTERESTED IN HOSTING a YEP STUDENT? (See Patty)