

THE ROTARY CLUB of WOOLGOOLGA Inc.

Woopi Whisper

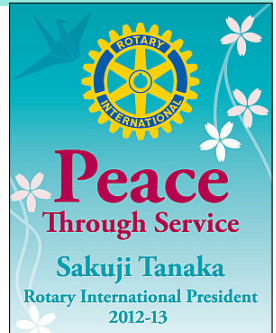


Club President
Pamela Fayle

District Governor
Brian Beesley

RI President
Sakuji Tanaka

VOLUME 25, Issue 18— 29 October 2012



**PUT 3 DECEMBER IN YOUR DIARIES AS A PARTNERS NIGHT
FOR OUR PRIDE IN WORK AWARDS NIGHT**

THIS WEEK (29 Oct)

We've all been waiting for those hyenas, particularly David F!! And here they are. Marcus Baynes-Rock is coming along to talk about his adventures in Ethiopia studying hyenas. Partners and guests welcome.



LAST MEETING (22 Oct)

Deb Thompson (ably assisted by Lisa Nichols) told us about CHES and its programs to assist disabled people back into the workforce. "Disabled" is a broad definition and many of the people assisted have suffered mental rather than physical illnesses and conditions and are seeking a way back into the workforce either part or full time.

CHES (Coffs Harbour Employment Support Service) began in Coffs Harbour and now deals with clients from Yamba to Nambucca with current plans to expand further. They also have a personal helpers and mentor program to assist some clients with shopping, finding accommodation etc.

CHES in Woolgoolga began operating out of the Neighbourhood centre with an outreach role but quickly expanded, & sublet offices in Market St before moving to larger premises in River St where they now offer a range of services to clients. When they find work for a client they monitor the situation for 6 months, including on-site visits to make sure things go well from both the employer and employee perspective. There are often government subsidies to assist employers in training & paying wages during the first 6 months of their employment. Centrelink is the gatekeeper and assesses how many hours the clients can work as some are on disability pensions (but around 8 hours of work a week is good for social interaction for people in this situation).



Deb says Woolgoolga employers are great and no-one resorts to this system to get cheap labour. CHES Woolgoolga takes great care to match clients with a job that suits their situation and that they will like. For employers, a disabled worker is likely to be more loyal and less likely to take unexpected sick days or not turn up because they value the jobs they do get. Their health conditions are known to employers before they begin. CHES Woolgoolga is proud to be rated as one of only a few 5 star disabled employment service operations nationwide. The Club asked Deb and Lisa to consider nominating

one of their successful clients for a Pride in Work award.

CLUB SPEAKER

It was Norm and he said: "3.14159 26535 89793 23846 26433 83279 50288 41971 69399 37510 58209 74944 59230 78164 06286 20899 86280 34825 34211 70679.....etc" and if you want to know how that ends, put 6 December in your diary and go see the movie 'Life of Pi' to help Sheridan Blayney raise funds for Ashley Haven Orphanage in Ethiopia.



Meeting Place

**Woolgoolga C.ex
(Bowling Club)**

Monday Evenings

6.00pm for 6.15pm

Apologies to

**6654 0373
by 10.30am Monday**



**Deb Thompson
from CHES
Woolgoolga**

STATS AT A GLANCE

Visiting Rotarians: nil

Visitors: Deb Thompson,
Lisa Nichols from CHES

Apologies: John, Peter B,
David E, George, Rob, Ec-
hah, Gareth, Rod, Garry,
Trish, Karen, Sel, Lyndee

Attendance: 11 (45.8%)

Raffle winner: Patty

Birthdays: Terry Booth 30
Oct

Anniversaries: Gareth &
Lisa Owen 26 Oct.

SERGEANT'S SESSION

Acting sergeant Glenda extracted significant fines from the select group in attendance by calling us "quality not quantity" and making us pay for the honour!! There were birthday fines, re-entry tax, an interesting plumbing fine and 'in the media' (or in one case 'should have been in the media') fines as well.

CLUB NEWS

Pride in Work: At our **3 December meeting** we will be making some Pride in Work awards to several recipients.

Car Boot Market is on Saturday 27 October at the High School car park (8am-1pm) to raise funds for the P&C. Phone Helen on 0412589051 by 20 October if you want to have a space to sell things (\$10 per car or area). Otherwise pop along to support the school by buying something interesting.

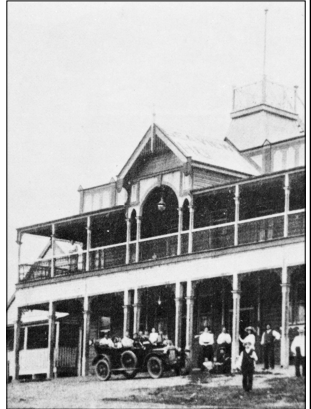
Movie fundraiser in Coffs: Put **6 December in your diary** as Sheridan Blayney has secured this date at the Bray St theatre for a fundraiser event for Ashley Haven orphanage in Ethiopia. The movie to be shown is "Life of Pi".

Christmas Party date to be put in your diaries. We are off to Grafton on **Saturday 15 December** to see the Archibald prize finalists at the Grafton gallery followed by lunch at the Duke St restaurant (1 Duke St) nearby.

ROTARY RECHARGE RIDE The DG is doing his Rotary Recharge motorcycle ride 3-10 November collecting old batteries along the way as a fundraiser. If you ride a motorbike and would like to join, contact Pam or David who have the details. There is also a lunch in Coffs on 8 Nov for those interested.

HERITAGE UPDATE AND PHOTO

By the time Yeates wrote *History of a Village*, it was thought that the first car to visit Woolgoolga was the c1913 Daimler in the photo of Sea View Hotel taken in 1913 or first half of 1914. A Dec 1906 article from *Northern Star* shows that one car was here much earlier: "**Remarkable Motor Car Performance.** Four months ago Mr. (Charles) Dorrough, (Lismore manager of British Australian Timber Co) purchased in Brisbane a Russell motor car, 16 h.p. double cylinder, made .. in Canada .. he put the car at the disposal of the heads of this concern for their organising work of the timber industry of the North Coast. Since this time the car has been running constantly between Grafton,



Newcastle (via Woolgoolga), Coffs Harbour, Kempsey, and the coast district ... (It) has travelled over 8000 miles - a truly remarkable performance, considering the roads traversed, ..the timetable set out has always been adhered to under all conditions of weather. ... During the 8000 miles the car has never been delayed on the road more than a few minutes .." In the Russell, the trip from Woolgoolga to Newcastle took two days.

Check out our new **Heritage Walk Website currently under construction:**

<https://sites.google.com/site/woolgoolgawalk/>

CLUB NOTICES

3 Nov Auction to help St Francis Xavier School
 5 Nov Melbourne Cup partners meeting
 12 Nov Board Meeting
 26 Nov Dive School Week begins
 1 Dec Auction and Xmas Stall
 5 Dec Volunteers Day BBQ

DISTRICT NOTICES

October is Vocational Services month
 27-28 Oct Presidents semi annual district mtg in Armidale
 24-25 Nov YEP briefing Port Macquarie
 26 Nov Woolgoolga Dive School
 December is Rotary Family Month

MEETING DUTY ROSTER Please swap nights if you cannot attend

Date	29 October	5 Nov (partners)	12 Nov (Board Mtg)
Attendance	Mary Bryant	Patty Delaney	David Edwards
Welcome/ Fellowship	Gareth Owen	Sel Rogers	Peter Bannister
Club Speakers 3-5 minutes	George Smede	FUN AND GAMES	Echah Wright
Introduce Guest Speaker	Glenda Kennedy	(BRING MONEY FOR SWEEPS)	Dick Matthews
Vote of Thanks	Karen Sedgwick		Terry Booth
Guest Speakers	Marcus Baynes-Rock Hyenas & Ethiopia	Melbourne Cup Night	tbc

Your Rotary Club Needs YOU
 Want to be on the BOARD? - (see Pam or Karen)
 Can you help with AUCTION PICK-UPS or auctioneering? (See Dick)
 WISH TO PROPOSE A NEW MEMBER? (See David E)
 KNOW A FAMILY INTERESTED IN HOSTING a YEP STUDENT? (See Patty)