

THE ROTARY CLUB of WOOLGOOLGA Inc.

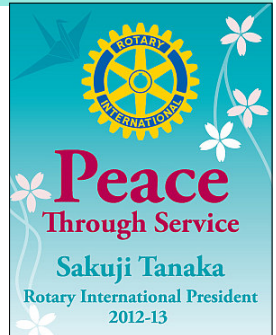
Woopi Whisper



Club President
Pamela Fayle

District Governor
Brian Beesley

RI President
Sakuji Tanaka



VOLUME 25, Issue 28— 4 February 2013

FIRST AUCTION FOR 2013 ON Sat 2 Feb to help Red Rock-Corindi Rural Fire Service

THIS WEEK (4 Feb)

Rachel Hall is coming along to tell us all about the year she has spent in Denmark. This is one not to miss so please feel free to bring your partner or guests (just let Karen know). It's hard to find places as far apart or as different as Woolgoolga and Fåborg. Having welcomed Rachel back at the airport I can tell you that her year abroad has not dulled the sparkle and she is already planning her next adventures as she settles back into life in Woolgoolga (and Corindi).



We are also hoping to hear from some of the local students we sponsored to attend science courses over the holidays.

LAST MEETING (21 Jan)

We were all channelling Freud as Professor Bell told us there was proof that some things were our mothers' fault!!! Alan Bell, former chief of CSIRO's Livestock Industries Division has done a lot of research on life before birth and showed us that smallness is indeed a big deal when talking about small birth weight.

Not only is there the obvious higher risk of infant mortality with low birth weight, but it has an impact on the likelihood of us developing a range of adult onset diseases including heart disease, high blood pressure and diabetes.



If you were a small baby, you will have to work that little bit harder to keep your body healthy in later life it seems. Alan told us about research he had done on sheep on the placenta and its importance for growth. Some of the earlier research on sheep has in fact helped develop the medical breakthroughs that keep premature babies alive and help them thrive these days.

There were some pretty interesting questions and I bet many went home to check their baby records to see how much they weighed in at when they entered the world!

THE HERITAGE WALK PROJECT

Can't take the teacher out of Norm...he brought along some show-and-tell to update us all on the Heritage Project. Some great progress has finally been made and two mock ups of panels were on display for all to see. The graphic designer is refining the rest of the panels and the team expects to view most of them soon. Quotes for the panels and hardware have been received. The content of several panels is still being finalised and the Heritage group continues to meet once a week. Much checking and double checking of facts, obtaining of permission to use photos and in depth research goes on behind the scenes.

Meeting Place

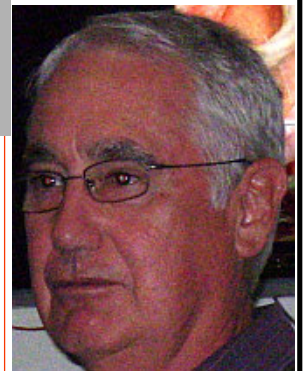
Woolgoolga C.ex (Bowling Club)

Monday Evenings

6.00pm for 6.15pm

Apologies to

**6654 0373
by 10.30am Monday**



Alan Bell,
Former Head of CSIRO
Livestock Division

STATS AT A GLANCE

Visiting Rotarians: nil

Visitors: Alan Bell and wife Gay, Silvia, Echah's friend Thea Eves and partners Col, Marie, Ila, Sally

Apologies: Garry, Rob, John, Kirpal, Mary, Gareth, Patty, Peter B, George

Attendance: 15

Raffle winner: Echah

Birthdays: Silvia Rodriguez 30 Jan, Garry Kennedy 6 Feb, Patty Delaney 8 Feb

Anniversaries: nil

SERGEANT'S SESSION

There was of course a horse accident fine for Echah on her first Rotary meeting back after dicing with death. Late fines for a few and a deaf fine for one (could have been one of many!!), a couple of golfers' fines of course and an anniversary fine for saying 36 years of marriage was easy to do because "my husband goes away a lot!".

CLUB NEWS

Birthday party for Silvia is on Friday 1 Feb at 6.30pm at Aloy Dee Thai restaurant in Woolgoolga for those who have rsvp'd. Our lovely Silvia turns 18 on 30 Jan so we are celebrating.

Rotary Friendship Exchange to Italy is apparently now fully subscribed despite the Feb closing date.

District Conference Registration is open. The conference (11-14 April) clashes with Club involvement in Curryfest. Nevertheless there will be some who wish to attend the conference which is being held in Taree this year and the club should be represented. Silvia will attend. See www.rotary9650.org.au.

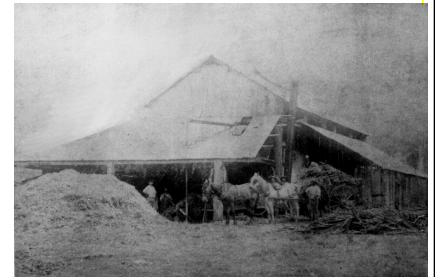
Curryfest Please reserve Saturday 13 April in your diaries if you are in town for Curryfest. We will be putting together a roster. There is no gate/entrance fee this year but Lions and Rotary will be covering entrances to Market St. with donation buckets throughout the day so we will need to roster club members for a 1-2 hour duty. There will also be some tasks for the group of Rotarians/spouses who are also friends or members of Woolgoolga Art Gallery. We will be putting together a team to cooperate with the gallery to organise exhibits and hang them during the week leading up to Curryfest and to man the opening of the exhibition on Friday 12 April 5 - 6.30 pm. To tempt you to join this team, there is likely to be a TwoTails Wine tasting at this event.



Donations Board decided to provide \$400 to assist bushfire victims in Coonabarabran; and \$200 each to assist those affected by fires in Tasmania and disasters in Samoa and the Philippines...\$1,000 in all.

HERITAGE UPDATE AND PHOTO

Before timber became the mainstay of Woolgoolga, sugar was the first major crop. Unfortunately the industry did not last long, largely due to competition from the Colonial Sugar Refinery. For a time, however, William Toft Pullen had a sugar mill in Woolgoolga (photo at right compliments of A. Hope). He had the prescience to design it so that it could also drive a future timber mill. Soon, that foresight paid off: he saw the writing on the wall and after a few bad seasons, converted part of the mill to a timber mill.



Check out our new **Heritage Walk Website** currently under construction:

<https://sites.google.com/site/woolgoolgawalk/>

CLUB NOTICES

28 Jan Public Holiday
 30 Jan Our Silvia's birthday!!!!!!
 1 Feb Birthday dinner for Silvia at Aloy Dee
 2 Feb Auction /Corindi Red Rock Rural Fire Service
 11 Feb board meeting

DISTRICT NOTICES

2 Feb YEP debrief Armidale
 11-14 April District Conference Taree
 27Apr -4 May RYLA, Keepit
 5 May District Assembly, Walcha
 17-18 May MUNA, Port Macquarie
 22 Jun Rotary International Conf Portugal

MEETING DUTY ROSTER Please swap nights if you cannot attend

Date	4 Feb	11 Feb board mtg	18 Feb
Attendance	David Edwards	David Fayle	Glenda Kennedy
Welcome/ Fellowship	Dick Matthews	Norm Michener	Keith Minhinnett
Club Speakers 3-5 minutes	Science students (tbc)	Kirpal Husna (self intro tbc)	David Edwards (recent trip to UK tbc)
Introduce Guest Speaker	Geoff Royal	Karen Sedgwick	George Smede
Vote of Thanks	Patty Delaney	David Edwards	David Fayle
Guest Speakers	Rachel Hall My year in Denmark	Jim Daniels Woolgoolga Scouts	Tbc

Your Rotary Club Needs YOU

Want to be on the **BOARD?** - (see Pam or Karen)

Can you help with **AUCTION PICK-UPS** or auctioneering? (See Dick)

WISH TO PROPOSE A NEW MEMBER? (See David E)

KNOW A FAMILY INTERESTED IN HOSTING a YEP STUDENT? (See Patty)