



Woolgi Whisper

The Rotary Club of Woolgoolga Inc.

PO Box 436, Woolgoolga NSW 2456
www.facebook.com/rotaryclubofwoolgoolga
woolgoolgarotaryclub.org.au
woolgoolgaheritagewalk.org

VOLUME 29 ISSUE 11 28 November 2016

Club President
Norm Michener
District Governor
Ian Jackson
Rotary International
President
John F GERM

Meetings each month
1st Sat: auction shed
8:30-3:30
2nd & 4th Mondays
6-8pm Woolgoolga C.ex
3rd Monday
Board meetings VIC
if 5th Monday,
contact Secretary

TONIGHT (28 NOV) MARK HANRAHAN—MEDICAL CENTRE SOLOMON IS.

Tonight **Mark Hanrahan** is coming all the way down from Capalaba QLD Rotary to tell us about a Rotary project building a **Medical Aid Centre in the Solomon Islands**, to service a community of about 5000 people in 24 villages. A team of 3 came back this month from several weeks at Molotabi Village, Malaita Island, where they got part of the 200 sq.m building to lock-up stage. Also on the team was **Peter Rheinberger** from Coffs Harbour South RC. The project involves a lot of local assistance, including the original concrete slab. Mark will tell us about financial aspects, as well as tricky logistics, setbacks through Dengue Fever outbreak etc. This is a **Rotary Australia World Community Service (RAWCS)** project that has been going for 5 years, & Mark was previously a member of sponsor club **Narrabri Rotary**.

CHRISTMAS PARTY MON 5 DEC – PLEASE RSVP NOW TO ECHAH

Anyone who has not already got back to Echah about whether they are coming or not to the **Christmas Party**—please **RSVP as soon as possible, including with your menu choice (menu is in email sent 21 Nov)**. If we get the numbers, we can go ahead with Plan A below. Otherwise it is Plan B. Rustic Mezedes usually do not open on a Monday night. Here is the invitation:

Here is the invitation:

Hello fellow Rotarians, and friends, It is again time for our end of year celebration, of fellowship and Christmas. I hope that you will all join us to make this gathering a joyous one. The Plan

On the Monday 5th Dec make your way to the Woolgoolga Beach Reserve around 5.30p.m. for light refreshment and Christmas snacks, and games. Please bring something and a serving dish, with you to share. e.g. Nuts, chips, pretzels, cheese and bikkies (not to much or we won't eat our dinner.)

Games:

If you have a set of Jeu de Boules or Boules, and /or a croquet set, quoits or any other genteel fun evening games, please bring it with you. Someone suggested sack races!!!!!!

The Journey

At about 6.45p.m. we will slowly sojourn to the restaurant of the Rustic Mezedes for some culinary delights, of a sit down dinner. Dinner will be in 2 parts and there will be a chance for people to mingle and or exchange chairs and places .



RSVP Echah Wright 0418 861 253 e.wright@ozemail.com.au

DONATIONS NEWS

- Lifeline provides a vital first response to assist those at risk of suicide or harm. The club has donated to **Lifeline North Coast** the cost of training an additional telephone counsellor – \$500.
- Mullaway Public School children, through a lot of hard work, raised \$325 to **restore the sight of children in developing countries**, through the **Fred Hollows Foundation's** new initiative, "Spread the Light with the Gift of Sight". The club has matched \$1 for every \$ raised by the Mullaway students; the total will help 26 children!
- The club supported the primary school **Great Debate** (\$100) – see previous Whisper for report – *photo above right*.
- **Akili Girls Preparatory School**, Kisumu, **Kenya** provides underprivileged girls with free, accessible, high-quality education. The club has provided a further \$200 support.
- A \$200 donation was provided to **Bear Cottage Hospice** (Children's Hospital Westmead) to assist with palliative care for children.

Secretary:
Patty Delaney
0429 449 385

APOLOGIES TO:
Echah
0418 861 253
6654 2557
by 9am Monday



STATS AT A GLANCE

Visiting Rotarians:
YEP:
Guests: n/a
Attendance: 12 (52%)
Apologies: John, Harjinder, David E, Trish, Thea, Gareth, Dennes, Dennis, Patty, Karen, Echah
Raffle:
Birthdays: Echah Wright 9 Nov, Elizabeth Phipps 13 Nov, Charles Phipps 16 Nov, Glenda Kennedy 18 Nov, Wayne Crivellone 27 Nov, Surinder Kaur 1 Dec
Anniversaries: Norm & Helen Michener 9 Dec

BOARD FOR INCOMING YEAR 2017-2018

At and after the Annual General Meeting (AGM) on 14 Nov, the following members volunteered to take on Board roles for next year, starting July 2017 (or *for the following year). We are very grateful for their willingness to serve:

President-elect 2017-2018 Pamela Fayle
 *President-nominee 2018-2019 Geoff Royal
 Secretary Patty Delaney
 Treasurer Kim Thompson (*new Director—thanks Kim!*)
 Vice President tba
 Immed. Past President Norm Michener

Directors will be finalised by the incoming President. Many of the current Directors have offered to continue.

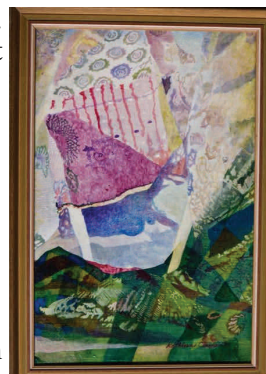
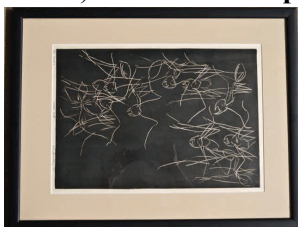
DECEMBER AUCTION

The December **auction** will be on 3 Dec, with the helpers being Woolgoolga Region Community Garden. Any help with pickups and on the day will be very much appreciated. We're hoping that the Advertiser will run an article publicising it.

ANYONE INTERESTED IN SETTING UP TO SELL SELECTED AUCTION ITEMS ON GUMTREE?

Quite often we get items donated to the Rotary auction that are highly unlikely to get respectable bids or even any buyer, because of their specialised or unusual nature, or high inherent value etc. Such items may be much more effectively marketable on GumTree or/and similar internet sales services. The club is **looking for someone** with the time and expertise (or at least the willingness to learn) **to set this up.**

Among the first items for sale will be six original artworks (*four shown here—photos, Allan Casey*).



BEST WISHES

Best wishes to **Leslie Casey** for a rapid and full recovery from a health scare.

CLUB NOTICES

3 Dec Auction (Woolgoolga Region Community Garden)
 15-21 Jan 2017 Dive course for D9650 YEP students
 4 Feb Auction (Woolgoolga Athletics Club)
 9 Mar 2017 RYDA (brought forward from August)
 4 Apr Science and Engineering Challenge

DISTRICT NOTICES

26-27 Nov YEP Briefing 2017 outlanders
 11-16 Dec Honeywell Engineering Summer School (HESS)
 9 Jan Sawtell BBQ for Cluster Clubs, Boambee Bay
 15-21 Jan 17 International Assembly, San Diego
 18 Feb Public Speaking semifinals, Walcha
 24-26 Mar District Conference, Laurieton

MEETING DUTY ROSTER Please swap nights if you cannot attend						
Date	28 Nov Partners	5 Dec Xmas Party	9 Jan Sawtell BBQ	16 Jan	23 Jan	30 Jan
Attendance	David Edwards	Rustic Mezedes tbc	Jan BBQ at Boambee Bay	tba	tba	Pam Fayle
Welcome/Fellowship	Gareth Owen		For Cluster Clubs			Lyndee Hagar
Introduce Guest Speaker/s	Karen Sedgwick					Dennis Houghton
Vote of Thanks	Mary Bryant					Echah Wright
Guest Speakers or Event	Mark Hanrahan (RAWCS), Solomon Islands					SES Commander local area

Your Rotary Club Needs YOU
 Want to be on the BOARD? - (see Patty)
 Can you help with AUCTION PICK-UPS or auctioneering? (See Dick)
 WISH TO PROPOSE A NEW MEMBER? (Contact Pam)
 KNOW A FAMILY INTERESTED IN HOSTING A YEP STUDENT? (See Patty)