



Woolgi Whisper

The Rotary Club of Woolgoolga Inc.

PO Box 436, Woolgoolga NSW 2456
www.facebook.com/rotaryclubofwoolgoolga
woolgoolgarotaryclub.org.au
woolgoolgaheritagewalk.org

VOLUME 30 ISSUE 10 13 NOV 2017

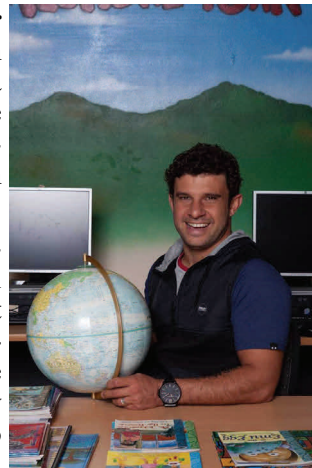
Club President
Pamela Fayle
District Governor
Bob Ryan
Rotary International
President
Ian Riseley

Meetings each month
1st Sat: auction shed
8:30-3:30
2nd & 4th Mondays
6-8pm Woolgoolga C.ex
3rd Monday
Board meetings VIC
if 5th Monday,
contact Secretary

TONIGHT (13 NOV) CLARK WEBB, LEARNING – ABORIGINAL YOUTH

Tonight we will hear from **Clark Webb**, on **Learning Outcomes for Aboriginal Youth**. Clark is the Director of Bularri Muurlay Nyanggan Aboriginal Corporation. Born on the Coffs Coast and raised at Nana Glen, Clark has a passion for education and improving the future of the local indigenous population, working passionately to preserve the Gumbaynggirr language and showing young Aboriginal people they can achieve success by setting an example.

Bularri Muurlay Nyanggan translates to “two path strong” in the Gumbaynggirr language. This program is designed to increase the cultural and educational success of Aboriginal communities on the Coffs Coast by offering after-school learning places, community Gumbaynggirr language classes, and cultural camps. The goal of the program is to ensure that young people are well educated so that they can compete for quality jobs, whilst at the same time being knowledgeable and proud of who they are as Aboriginal people.



Secretary:
Patty Delaney
0429 449 385

APOLOGIES TO:
Karen
0410 039 805
before 9am
Monday

AUCTION ON 4 NOVEMBER

A big team of **Interact Club** members put in a big day’s work at our November monthly



monster mega auction – thank you to the whole team, some of whom are shown in the photo, having been presented with a cheque with part of the proceeds for their work. It was another strong auction result, and we were very lucky with the weather, as the forecast storms held off until Saturday evening. The inaugural Blues and Berries Festival the following day was fortunate to largely escape those storms as well. Thank you to other Friends, including **Abdu Adem** and **Chris Edwards**, Partners and Rotarians who also put in a taxing day’s work and/or helped with pickups during the month.



We still have a chronic over-supply of just about everything at the shed, and would like to spread the word that most of the items may be purchased by arrangement during the month for a fair and decent offer, and usually we are more than happy to sell items. Contact us via the club website [see masthead] or phone Dick on 6654 1828.

CURRYFEST VOLUNTEER TEAMS REWARDED

The **Curryfest** volunteers were presented with their cheques by Chamber President **Cherie Topfer**. Benefitting were our club, Woolgoolga Surf Life Saving Club, Woolgoolga Red Cross, Woolgoolga Art Group, Woolgoolga Scouts, Woolgoolga Athletics Group, Woolgoolga Garden Club, Woolgoolga Meals on Wheels and Woolgoolga Marine Rescue.



STATS AT A GLANCE
Visiting Rotarians:
YEP: Matilde
Guests: [23 Oct] Elizabeth de Halleux, Rachel Hall, Partners Helen, Sally
Attendance: [23 Oct] 11 (48%); [Cup Eve] 10 (43%)
Apologies: [23 Oct] John Arkan, Harjinder Singh, Gareth Owen, David Edwards, Mary Bryant, Kim Thompson, Dick Matthews, Rod Mackenzie, Karina Bettison, Echah Wright, Glenda Kennedy, Pam Stone
Birthdays: Echah Wright 9 Nov, Elizabeth Phipps 13 Nov, Charles Phipps 16 Nov, Glenda Kennedy 18 Nov,
Anniversaries: –



REPORT – (23 OCT) OUR ELISABETH RETURNS

Since her YEP year here in 2012, **Elisabeth de Halleux** has achieved Bachelor's & Master's degrees at the Free University of Brussels in Biomedical Engineering, a relatively new field, covering medical devices related to the body that help in diagnosis and treatment. Her studies included bio-mechanics, electronics and medicine – the latter vital for accurate communication with doctors. Three main aspects are orthopedics (related to joint replacement etc), instrumentation (for stimulation, recording, image processing etc), & medical imaging. Matilde, who prefers modern to ancient history was surprised to learn that the ancient Greeks used artificial prostheses! Elisabeth outlined the global medtech industry, and mentioned her thesis work on shoulder prostheses. In Dec she will join a 4-person consultancy company facilitating biomedical projects, in both technical and regulatory aspects. Until then she is loving catching up with friends here.

MELBOURNE CUP EVE ON 6 NOVEMBER

The Micheners hosted a very enjoyable Melbourne Cup Eve function on 6 November at their home, and managed to organise a spectacular electrical storm for our entertainment, to go with their equally spectacular view. Guests put on a great banquet, and the traditional horse race and quirky obstacle course game dreamed up by Glenda caused plenty more hilarity, particularly when the storm put us in darkness for quite a while – which didn't really make much difference to the blindfolded person putting a tail in interesting places on a horse! Horse owner President Pam and jockey Dick proved unbeatable in the horse race, but the horse with titanium knees called "The Octagenarian" was still in the barrier when the race finished – leaving owner yours truly (deputising for a certain absent octagenarian!) and jockey Lyndee wondering about odds and loaded dice ... Thanks Glenda for organising the entertainment, and to our hosts Helen and Norm.



Sweep results: 1ST (\$25 Rekindling 22) Karen Sedgwick (*Irish-trained horse, to be sure*) & Tim Fayle; 2ND (\$14 Johannes Vermeer 7) Norm Michener & Dennes Fayle; 3RD (\$7 Max Dynamite 9) Glenda Kennedy & Col Cafferky. Notably this year, no "Matthews" appears among the winners, though Dick was heard to tip Johannes Vermeer to do well, and your editor, who was carefully listening, placed a bet at the TAB that very nearly paid off & certainly made the race more exciting.

VALETE

With deep sadness we must report the loss of two men who contributed much to our club:

- **John Mitchell**, member, passed away on 21 October. He lost his battle with cancer. In his short time with us, he made a significant and devoted contribution, despite his health problem. Our condolences to Cathie and to family and others close to John.
- **Merv Richardson** (Mervyn James) died peacefully and unexpectedly at home on 29 October. "Rowdy" was a well-loved member of our club from 2004 to 2011, and later a friend of Rotary, and contributed much to our club service and fellowship. Our condolences to Joy and his three girls and their families.

Note: A *Celebration Service for Merv* will be held at 10am Friday 10 November at the Community Mud Brick Hall next to the Seniors Centre. Our club is catering the event, and written shared "stories" and photos would be very much appreciated on the day.

CLUB NOTICES	20 Nov	Resuscitation training, C.ex 6:30pm	DISTRICT NOTICES	25-26 Nov	Pre-PETS (President-elect Training) Tamworth
	26 Nov-3 Dec	Dive course for YEP students		10-11 Feb 18	District Training
	2 Dec	Auction (Red Cross, + Woopi High students)		24-25 Feb 18	PETS (President-elect Training) 2018-19, A'dale
	18 Dec	Christmas Function (Beach House Cafe)		9-11 Mar 18	District Conference Armidale
				7-14 Apr 18	Bookfest (Coffs Harbour South Rotary)

MEETING DUTY ROSTER Please swap nights if you cannot attend						
Date	13 Nov Meeting	20 Nov Board	27 Nov Meeting	4 Dec No meeting	11 Dec Meeting, AGM & Board	18 Dec Xmas party
Attendance	David Edwards	4:15pm VISITORS	Peter Lacy	No meeting	Karina Bettison	BEACH HOUSE CAFE
Welcome/Fellowship	Norm Michener	INFO CENTRE	Mary Bryant	Auction in lieu	Echah Wright	
Introduce Guest Speaker/s	Lyndee Hagar		Leslie Casey		n/a	
Vote of Thanks	Kim Thompson		Dennes Fayle		n/a	
Guest Speakers or Event	Clark Webb Learning Outcomes for Aboriginal Youth		Jacqui Bruce podiatrist		Members: 5 minuters on recent travels	

Your Rotary Club Needs YOU

Want to be on the BOARD? - (see Pam or Geoff)

Can you help with AUCTION PICK-UPS or auctioneering? (See Dick)

WISH TO PROPOSE A NEW MEMBER? (Contact Pam)

KNOW A FAMILY INTERESTED IN HOSTING A YEP STUDENT? (See Patty)